



Digital 2D Coordinate Measuring Machine

MODEL EX-2515YS

PROTEC 2D coordinate measuring machine series are highly reliable devices which hold precision and operability in high regard as their primary purposes. It can be used to measure dimensions, inspect hole pitch, and measure coordinates for wide range of relatively small sized plate products such as printed circuit boards, liquid crystal glass substrates, precision photomasks, screen masks, various films, block copies, several types of printed matter. Measured data can be printed, and also converted to Excel and CAD/CAM.

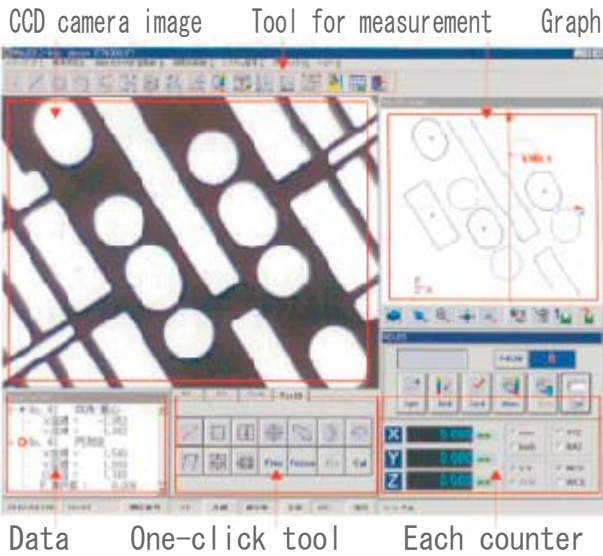


■ SPECIAL FEATURES OF PRODUCTS

- Efficient in terms of time and accuracy
Measured data can be converted to Excel form so that time is saved and you can avoid mistakes in transcription.
- Easy to operate
Featuring edge sensor to eliminate errors by inspectors. Anyone can achieve high-precision measurement.
- No construction necessary for installation
Facilities such as air plumbing are not necessary to arrange. Due to small size, it is easy to move.
- LED lighting as standard equipment
LED epifluorescence light is equipped as standard feature.
- PC environment as standard equipment
Personal computer with 17 inch TFT monitor is equipped as standard feature.

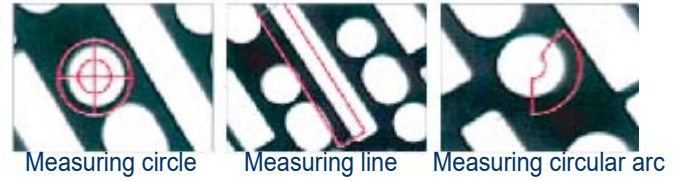
PROTECENG CO.,LTD.

● Measuring Software Display (17 inch TFT)



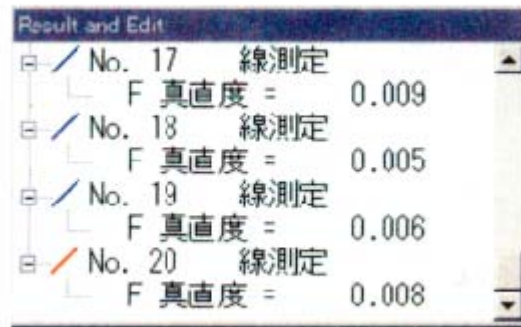
● Equipped with edge sensor

By mouse-clicking on measuring points, automatic measurement can be made, thus eliminating errors depending on inspectors.



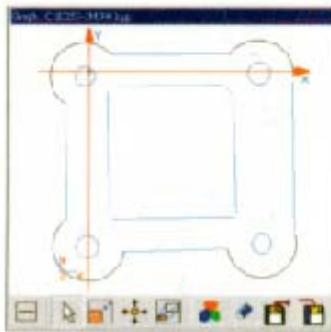
- Basic measurements such as points, lines, circles and circular arcs (up to 500 points)
- Indirect measurements such as distance, angle midpoint
- Coordinate measurements such as axial adjustment and origin shift
- Rerunning by invocation

● Measured data



- Output of measured data includes geometric calculated value such as roundness other than X and Y axial lines.
- Shortest distance and longest distance can be calculated.
- Each measured data has measurement numbers attached. Recalculations are easy by inputting the measurement numbers in result recalculation mode.

● Graphic display



- Draw figures at the same time of measurement
- Recalculation can be done by simply clicking measured parts on the graph instead of numbers of result recalculations.
- Graphs can be saved in DXF or BMP files, also can be transferred to CAD/CAM for editing.

■ Main specification

Model	EX-2515YS	
Measuring range	250 × 150 (XY axis)	
Minimum indication value	0.001mm	
Measurement accuracy	3+L/200 μm, 20°C ± 1°C	
Method of operation	Manual	
Sensor	Linear scale	
Environmental condition	Temperature	15 ~ 40°C
	Humidity	30 ~ 80%
Image detection	High resolution CCD color camera	
Lighting system	LED epifluorescence lighting system	
Zoom lens-barrel	x0.75 ~ x5.25	
PC	Windows XP on board personal computer included	
Monitor	17inch liquid crystal monitor	
Power source	AC100V, 10A	
Mass	Approx. 120kg*1	
Dimensions	750(W) × 500(D) × 956mm(H)*2	

*1: Main unit weight only *2: PC and monitor are not included.

* Specifications and design details may be subject to change.

Manufacturer :



for more information: