



Digital 2D Coordinate Measuring Machine

MODEL EX-4050Y/7070Y

PROTEC 2D coordinate measuring machine series are highly reliable devices which hold precision and operability in high regard as their primary purposes. It can be used to measure dimensions, inspect hole pitch, and measure coordinates for wide range of relatively small sized plate products such as printed circuit boards, liquid crystal glass substrates, precision photomasks, screen masks, various films, block copies, several types of printed matter. Measured data can be printed, and also converted to Excel and CAD/CAM.



EX-4050Y

EX-7070Y

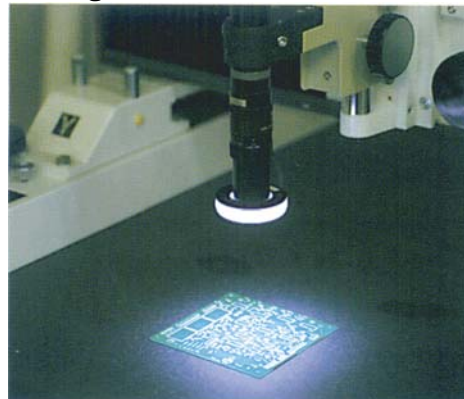
Major characteristics

Fine traveling device	Equipped with fine traveling device for XY axis with good operability
Easy to operate	Featuring edge sensor, thus eliminating errors by inspectors Excellent system environment allowing free editing and operation
Speedy and efficient	Measured data can be transferred to Excel files to save time in transcription. Factors can be graphically displayed for edit and comparison on CAD/CAM. Data can be saved in CAD DXF files.

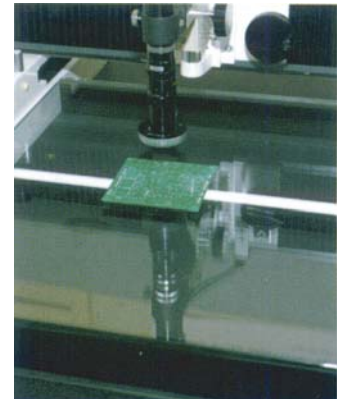
Zoom microscope (0.75~4.5x)



LED light

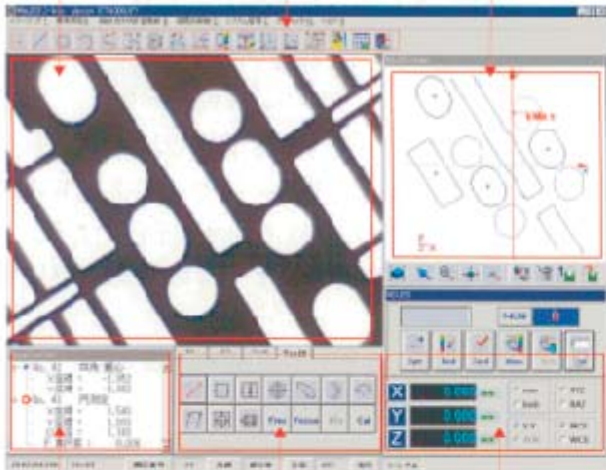


Transmitted illumination (Optional)



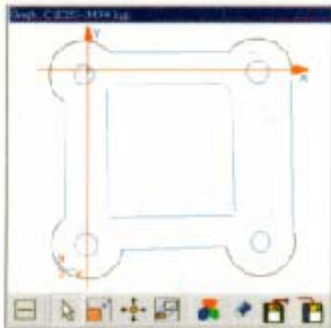
● Measuring Software Display (17 inch TFT)

CCD camera image Tool for measurement Graph



Data One-click tool Each counter

● Graphic display



- Draw figures at the same time of measurement
- Recalculation can be done by simply clicking measured parts on the graph instead of numbers of result recalculations.
- Graphs can be saved in DXF or BMP files, also can be transferred to CAD/CAM for editing.

● Equipped with edge sensor

By mouse-clicking on measuring points, automatic measurement can be made, thus eliminating errors depending on inspectors.



- Basic measurements such as points, lines, circles and circular arcs (up to 500 points)
- Indirect measurements such as distance, angle midpoint
- Coordinate measurements such as axial adjustment and origin shift
- Rerunning by invocation

● Measured data

Result and Edit	
[-] / [✓] No. 17	線測定
F 真直度 =	0.009
[-] / [✓] No. 18	線測定
F 真直度 =	0.005
[-] / [✓] No. 19	線測定
F 真直度 =	0.006
[-] / [✓] No. 20	線測定
F 真直度 =	0.008

- Output of measured data includes geometric calculated value such as roundness other than X and Y axial lines.
- Shortest distance and longest distance can be calculated.
- Each measured data has measurement numbers attached. Recalculations are easy by inputting the measurement numbers in result recalculation mode.

■ Main specification

Model	EX-4050Y	EX-7070Y
Measuring range	400 × 500mm(XY axis)	700 × 700mm(XY axis)
Table size	500 × 800mm(XY)	1000 × 1200mm(XY)
Minimum indication value	1 μm	
Measurement accuracy	5+5L/1000 μm, 20°C ± 1°C	
Method of operation	Manual	
Sliding area	LM guide	
Sensor	Linear encoder	
Environmental condition	Temperature	15 ~ 40°C
	Humidity	30 ~ 80%
Image detection	High resolution CCD color camera	
Lighting system	LED epifluorescence lighting system	
Zoom lens-barrel	x0.75 ~ x4.5 (Approx. 23.6 ~ 152x in using 17inch monitor)*1	
PC	Windows XP on board personal computer included	
Monitor	17inch liquid crystal monitor	
Printer	A4 Color printer	
Power source	AC100V, 10A	
Mass	Approx. 250kg*2	Approx. 900kg*2
Dimensions	720(W) × 800(D) × 1180mm(H)*3	1350(W) × 1200(D) × 1160mm(H)*3

*1: Magnifications quoted here are values by calculation, and not correspondent with actual magnification rates.

*2: Main unit weight only *3: PC and monitor are not included.

* Specifications and design details may be subject to change.

Manufacturer :

PROTEC ENGINEERING
PROTEC ENG CO., LTD.
 3180-3, NAGATSUTACHO, MIDORI-KU, YOKOHAMA, JAPAN
 TEL: 045-532-6314 / FAX: 045-532-6315
 URL: http://www.proteceng.jp E-Mail: info@proteceng.jp

for more information: